


PAINT RECYCLING IN CLARK COUNTY

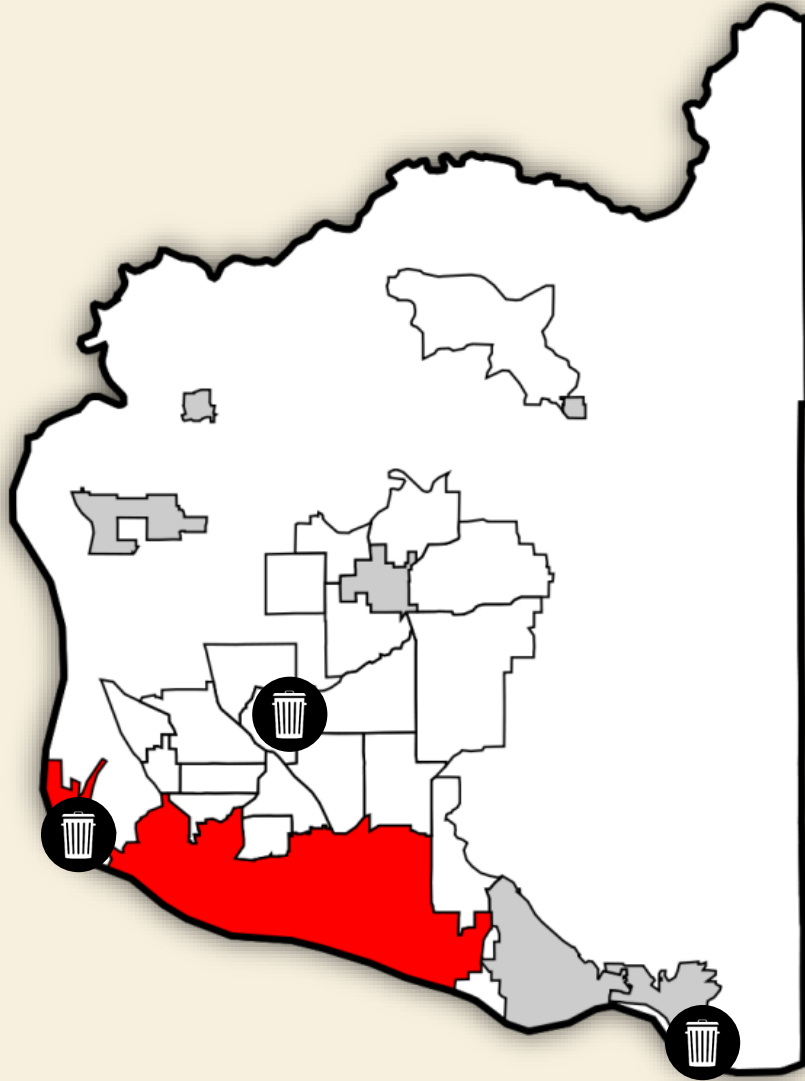


**WASHINGTON RECYCLES EVERY DAY (WRED)
DECEMBER 1ST, 2016
WATER RESOURCES EDUCATION CENTER**



IS CLARK
COUNTY A MODEL
FOR PAINT
RECYCLING IN
WA?

QUESTION OF THE DAY



CLARK COUNTY, WA

Seven cities and a town

Largest city: Vancouver

Population: 443,817

Process about 500,000
tons of material per year

2% increase in population

12% increase in tons of
garbage



PAINT COLLECTION POINTS

1. Mobile Collection (Recycling Day Events)
2. Paint Take Back Program participating stores
3. Transfer Station Household Hazardous Waste Facilities



2015 CLARK COUNTY PAINT WEIGHTS

Total Transfer Station	896,430
• Latex paint:	616,650
• Oil-based paint and PRM:	251,613
• Aerosol Paint:	28,167
Paint Stores	147,075
Recycling Day Events	105,205
• Latex paint:	59,450
• Oil-based paint and PRM:	42,690
• Aerosol Paint:	3,065



PAINT DESTINATIONS

1. Paint collected from the stores goes to the transfer station
2. Paint at the transfer station is picked up with other materials collected at the HHW facilities for processing by Stericycle

Paint from Transfer Stations:

- Latex paint goes to GDB International, Inc. in Nashville, Illinois for recycling
- Oil-based and PRM shipped to cement kilns in Missouri, Kansas, and Arkansas

Paint from mobile events:

- Latex paint was shipped to Amazon Environmental, Inc. for recycling
- Oil-based and PRM shipped to cement kilns in Missouri, Kansas, and Arkansas

WHY ISN'T PAINT GOING TO METRO?

- In 1999, Clark County signed a contract with Metro to recycle latex paint
 - Cost: \$0.25 per pound
 - Metro supply the County 1,000 gallons of paint at no charge for use by local governments, schools, and nonprofits
- In 2004, Metro amended the agreement to exclude the supply of free paint by Metro (County distributed over 2,500 gallons)
- In July 2009, Metro no longer accepted latex paint from Clark County or any other agency outside of Portland Metro
 - Clark County's latex paint was then solidified and landfilled
- In 2010, the County again started recycling latex paint!
 - Since 2011, latex paint has gone to GDB International, Inc.
- Oil-based paint and PRM has always gone to the cement kilns in Midwest




MOBILE
COLLECTION
(RECYCLING
DAY EVENTS)

PAINT COLLECTION POINT #1

MOBILE COLLECTION EVENTS (1986-)

- Recycling and HHW collection
 - Included paint and paint-related materials (PRM)
- 2015: Recycling Day Events
 - 105,205 pounds of paint and PRM collected (59,450 was latex paint)
- 2016: No more paint collection
 - HHW (and thus paint and PRM) was removed from Recycling Day Events





PAINT TAKE
BACK PROGRAM
PARTICIPATING
STORES

PAINT COLLECTION POINT #2

PAINT TAKE BACK PROGRAM

- Product Stewardship? Not really.
- Stores throughout the County collect latex and oil-based paint, as well as paint-related materials, and a few collect aerosols.
- All paint ends up at Central Transfer & Recycling (CTR)
- County contracted with Stericycle for transportation:
 - 2016: \$90 per load transported from a paint store to CTR
- CRC pays for processing costs
 - Paint from stores is added to transfer station paint that is picked up by Stericycle for processing
 - Will discuss further...

PROGRAM MATERIALS

ACCEPTED

- Latex Paint
- Oil-based Paint
- Lacquer
- Enamel
- Stain
- Shellac
- Varnish
- Thinners
- Aerosol paint cans (Not at all stores)



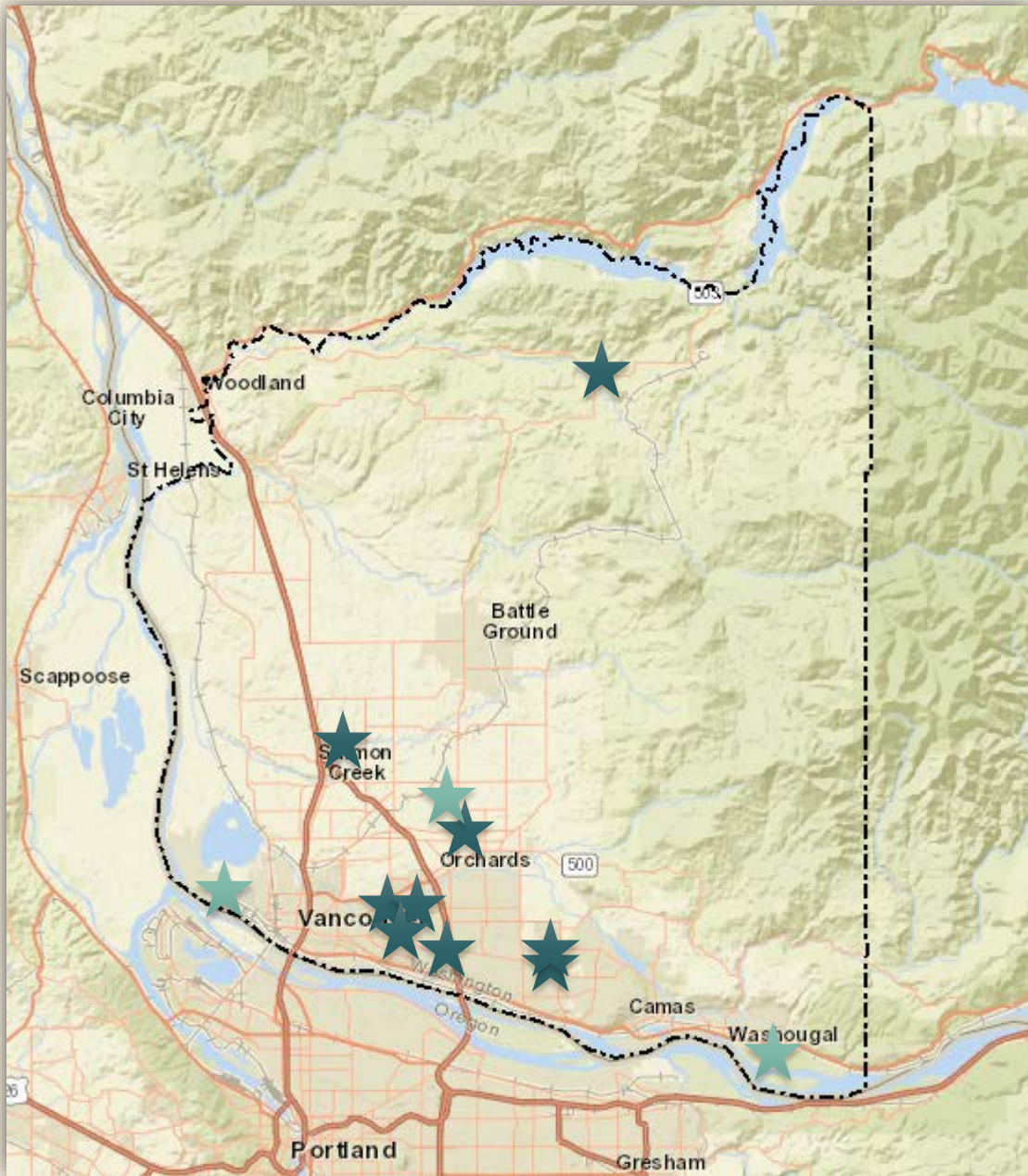
UNACCEPTABLE

- Anything that is not paint-related:
- Adhesives and glues
- Waxes and polishes
- Putty/Filler: wood, auto, etc.
- Tars
- Driveway sealant
- Used motor oil, gasoline, or antifreeze
- Other hazardous waste
- No cleaners, foams, polishes, pesticides, etc.

PAINT TAKE BACK PROGRAM PARTICIPATING STORES

- Free for stores to participate
 - Free advertising
- 9 paint stores throughout the county
 - Miller Paint (4)
 - Parkrose Hardware (2)
 - Rodda Paint (1)
 - Habitat for Humanity ReStore (1)
 - North County Hardware (1)
 - *Pending*: Ace Hardware (2)





★ Transfer Station

★ Participating Paint Store

TIMELINE OF PARTICIPATING STORES

- 2005: PTB Launched
 - Miller Andresen and Rodda Paint
- 2006: Miller Salmon Creek added
- 2009: Parkrose Hardware East Vancouver and Clark County Habitat for Humanity ReStore added
- 2014: Miller 117th and North County Hardware in Amboy, WA added
- 2016: Miller East Vancouver and Parkrose Mill Plain added
- 2017: ???





TRANSFER STATION HHW FACILITIES

PAINT COLLECTION POINT #3



WHY IS THERE PAINT RECYCLING IN CLARK COUNTY?

KIM'S QUEST FOR KNOWLEDGE, YEAR TWO

TRANSFER STATION CONTRACT

- Article 10. CONTRACTOR'S BASIC RESPONSIBILITIES
- 10.1 General. The Contractor shall accept, Transfer, Transport and Dispose of all Acceptable Waste, using Facilities necessary to perform its obligations under the Contract, and shall handle Household Hazardous Waste in accordance with the Contract. The Contractor shall construct or otherwise provide for, test, obtain all approvals for, maintain, operate and, unless acquired by the County, later close, in accordance with the Contract, and all applicable federal, state and local laws or regulations:
 - 10.1.6 Household Hazardous Waste drop-off Facilities.

TRANSFER STATION CONTRACT

- Columbia Resource Company (CRC)
- First contract in 1990
- 2nd Contract in 2006
 - Language in Section 18.19.2:
“After commencement of operations of the East County Transfer Station, all costs associated with the furnishing and operation of a Household Hazardous Waste facility, including cost of disposal, shall be included in the fees paid to the Contractor and no additional compensation shall be paid. Until commencement of operations of the East County Transfer Station, County shall compensate Contractor for disposal, only, of Household Hazardous Waste”
- County was paying for disposal prior to opening of third transfer station
- What was historically collected in the past (1990 contract) would continue in new contract (2006) – informal
 - Precedent for residents
 - Maintain service level – *great customer service!*

MINIMUM ANNUAL RECYCLING REQUIREMENT (MARR)


- Contractor incentivized to recycle
 - 9.1.1 Minimum Annual Recycling Requirement. The Contractor shall satisfy a minimum annual recycling requirement or waste reduction goal (the “Recycling requirement”) of **ten percent** of the Waste delivered to the Transfer Stations or Recycling Processing Center...
- If the contractor fails to comply they must pay the County a fee calculated using the shortfall tons, tip fee, and the percentage points below the requirement
- 2015: 54 tons of latex paint included in MARR calculation



WHAT IS THE
FUTURE OF PAINT
RECYCLING IN
CLARK COUNTY?

FUTURE OF PAINT RECYCLING IN CLARK COUNTY

- Columbia Resource Company doing a great service to the community!
- If PaintCare-type model implemented
 - Paint stores would already be engaged and knowledgeable
 - Residents would already be trained to take back to the stores
 - Seamless transition (from resident perspective)
- If Stericycle paint processing facility built
 - Paint would be processed locally instead of shipped out of state
- Additional County Goals:
 - Residents to be able to buy back their own paint – *Keep it local!*
 - Continue to recycle and promote opportunities for improvement



IS CLARK
COUNTY A MODEL
FOR PAINT
RECYCLING IN
WA?

QUESTION OF THE DAY

SHORT ANSWER: PROBABLY NOT

- Unique contract history and contractor partnership
- Contract negotiation
 - Add paint recycling
- Find a way to pay for it...
 - Partner with stores
 - Pay for transportation and disposal



Kim Harless

**Environmental Operations Specialist
Public Health, Solid Waste**

kim.harless@clark.wa.gov

(360) 397-2121 ext. 5957

FIN